



STATE REPRESENTATIVE

 **DARYL METCALFE**

12th Legislative District, Butler County



Who is responsible for approving and prioritizing road projects, like Rt. 228, in Pennsylvania?

Road projects in Pennsylvania are approved and prioritized by two government entities, neither of which is the Pennsylvania legislature.

The two entities that approve and prioritize road projects are:

- The **State Transportation Commission (STC)**
- The **Metropolitan Planning Organization (MPO)** for the region of the state where the road project is located

The State Transportation Commission

The **STC** is comprised of 15 members:

- Ten members are appointed by the Governor
- The Governor's Secretary of Transportation serves as the Chairman of the Commission
- The remaining four members are the Transportation Committee Chairmen of the Pennsylvania House of Representatives and Senate

The **STC** is responsible for developing the Commonwealth's twelve-year transportation program.

The Metropolitan Planning Organization

MPOs were created by federal law, and they interface with the **STC** to prioritize and direct federal and state tax dollars for transportation projects.

The **Southwestern Pennsylvania Commission (SPC)** is the **MPO** responsible for ten counties in Southwestern Pennsylvania, including Butler County.

The **SPC's** web site states that it is comprised of sixty-plus members, including:

- Five members from each of the ten counties and Pittsburgh
- Five members from the federal government
- Seven members from the Governor's branch of our state government
- Two members from the Port Authority of Allegheny County
- One member from the Transit Operators Committee

Their web site states that the "**SPC** is responsible for planning and prioritizing the use of all state and federal transportation funds allocated to the region. The Commission has the authority and responsibility to make decisions affecting the ten-county region."

The **Butler County Commissioners** are three of our county's five members on the **SPC**. They are also responsible for appointing the remaining members and **are the only elected officials in Butler County who have a vote in the process to prioritize transportation projects, such as Rt. 228.**

Please see reverse side for conclusion.

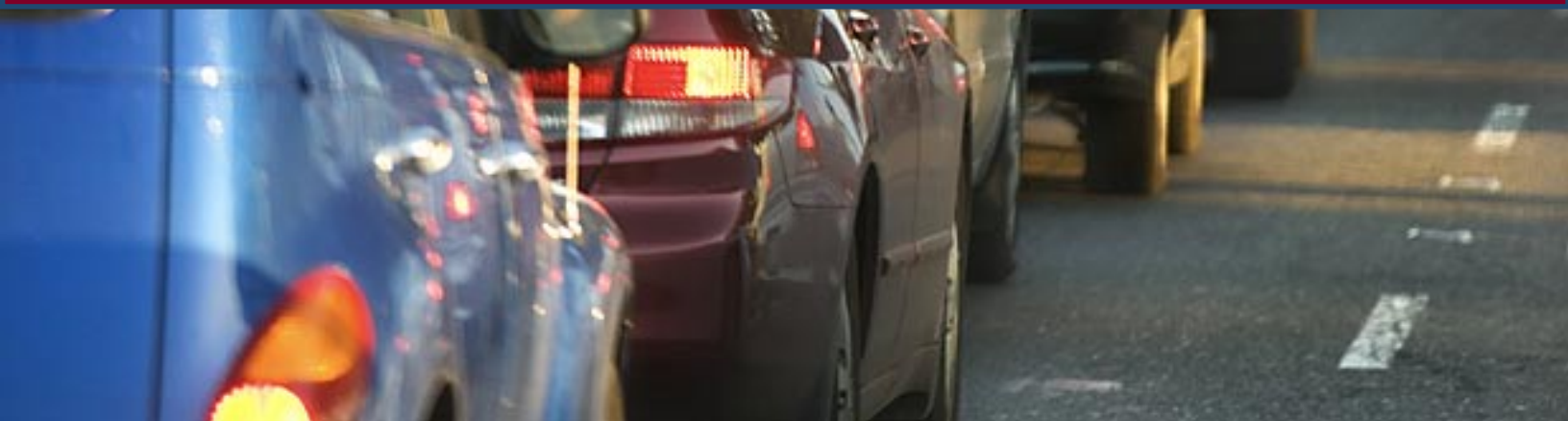
Conclusion



Projects like Rt. 228 have been short changed due to the Governor spending hundreds of millions of federal transportation dollars on mass transit instead of our roads and bridges. This action by the Governor was approved by a super majority vote of the **SPC**.

I am, have been, and will continue to be a voice for the improvements that are needed to increase safety, reduce traffic congestion and encourage economic development throughout the whole Rt. 228 corridor from Cranberry Twp. through Seven Fields, Adams Twp., Middlesex Twp. and Clinton Twp.

As a state legislator, I represent the individual citizens of all the affected municipalities, but my elected office does not provide me with the authority to make final decisions on the implementation of any road project, including Rt. 228.



Sign Up for The Metcalfe Memo

Every month Representative Metcalfe sends out an e-mail update exclusively focused on legislative issues called “The Metcalfe Memo.”

If you are not currently receiving “The Metcalfe Memo” and would like to be added to the list, please send an e-mail to sclarke@pahousegop.com.

Remember to include your first and last name and e-mail address in the message.

Or, you can call Representative Metcalfe’s district office at (724) 772-3110.

Visit Representative Metcalfe on the Web at RepMetcalfe.com